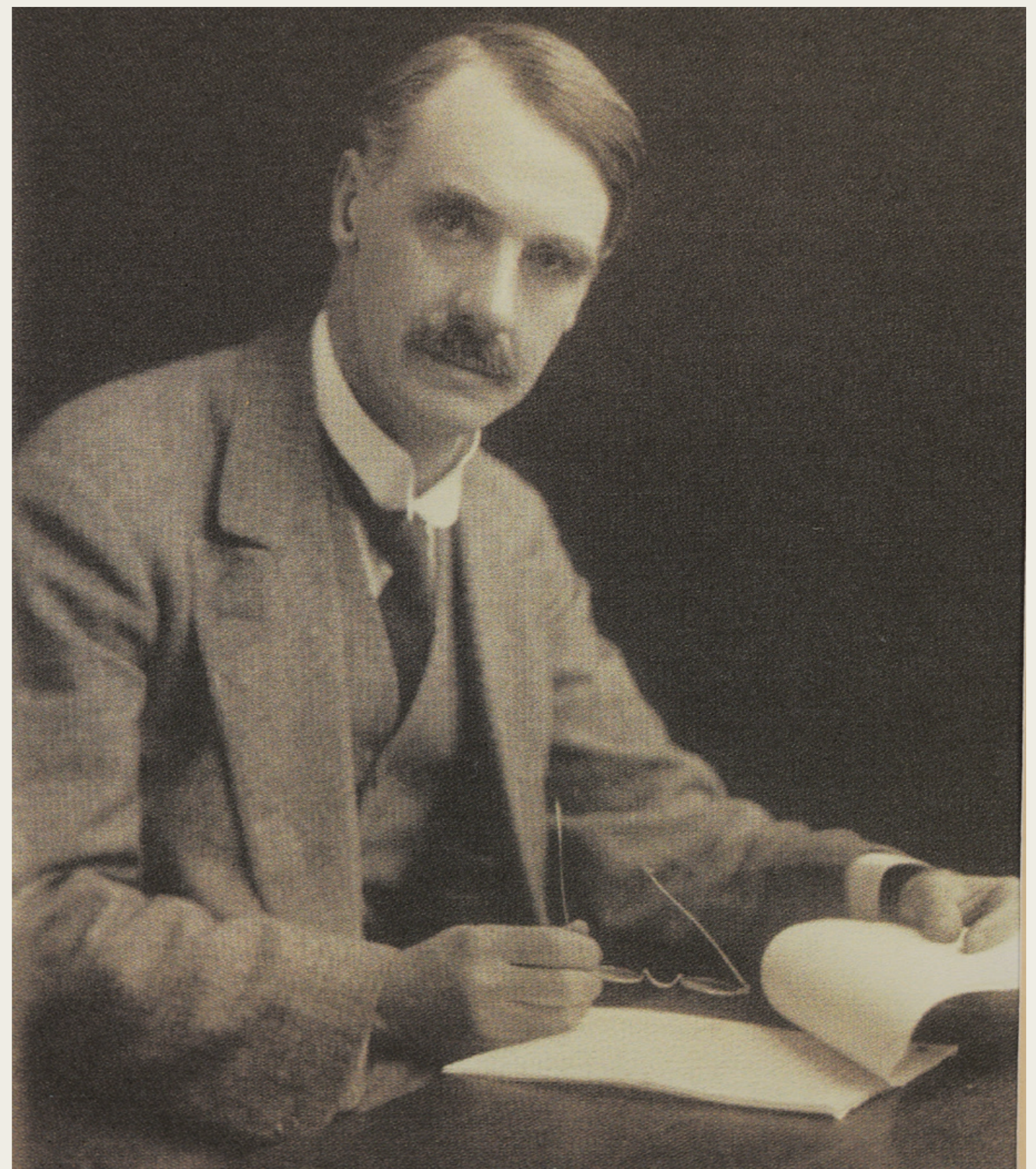


Nature & nurture

Thomas Mawson designed Brockhole's gardens – including the kitchen garden. He also designed and built gardens, park and civic landscapes across Europe and North America.

Mawson was born near Lancaster, 30 miles away. He began his solo career in the Lake District in the 1880s. He understood the local landscape and climate, and his garden designs, using natural and artificial styles, reflected this.

He became internationally successful. You can see Mawson's work throughout the British Isles and Europe. He worked in North America, he designed Stanley Park in Blackpool, The Peace Palace in The Hague, Netherlands, and The Villa Achilleon on Corfu, for Kaiser Wilhelm II.



Thomas Hayton Mawson (1861-1933) was a prolific horticulturalist, garden designer and builder. As a teacher, writer and campaigner, his design style influenced built landscapes across the world throughout the 20th century.

Budding partnerships

Thomas Mawson was commissioned by William Gaddum to develop Brockhole's gardens. Under Gaddum's instruction, Mawson worked closely with architect Dan Gibson to deliver a Lake District garden.

Thomas Mawson developed garden designs with Brockhole's owners, William and Edith Gaddum. They directly influenced how it looked.

Mawson worked closely with house architect Dan Gibson to deliver the Gaddums' vision of a Lake District home. The house and gardens were designed to complement each other.

Mawson and Gibson made the best of the challenging Lake District landscape. Mawson expertly used terracing and planting to disguise the site's sloping ground and building material was quarried from the ground on site.

William Gaddum (1856-1945) was a Manchester silk merchant. New railways helped rich industrialists and businessmen of northern England to escape to the country. Gaddum purchased the land in 1896 for its magnificent views of Lake Windermere.



Edith Gaddum instructs two men at Brockhole, 1899. We think these include Mawson (pointing and wearing wellingtons). The other man may be Dan Gibson. We think William Gaddum took this photo of his wife.



William Gaddum probably took this photograph from the house towards the kitchen garden in 1899. The figures shown could be Thomas Mawson, discussing garden arrangements with Mrs Gaddum at an early stage of the project.

William's wife Edith Gaddum (1864-1937) was a cousin of the author Beatrix Potter.